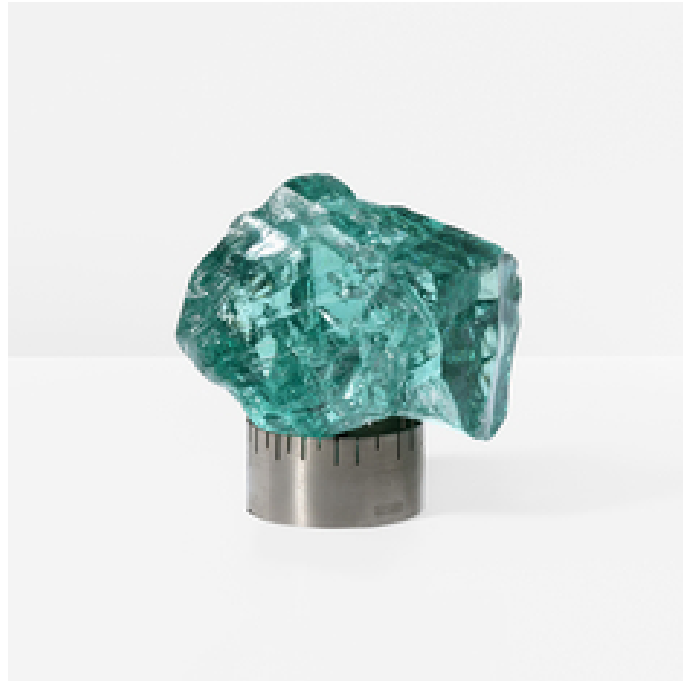


ALEXANDRE BIAGGI

Décoration  
Mobilier et objets du XXe siècle  
Design contemporain



MAX INGRAND (ATTR.)

Lampe

circa 1960

Signé "Saint gobain"

Laiton nickelé, bloc de cristal

H : 22 cm / L : 22 cm / P : 17 cm

Table lamp

circa 1960

Signed "Saint Gobain"

Nickel plated brass, crystal block

H : 8.5/8" / Width : 8.5/8" / D : 6.3/4"

Price on request

Paris, le 29/04/2026

